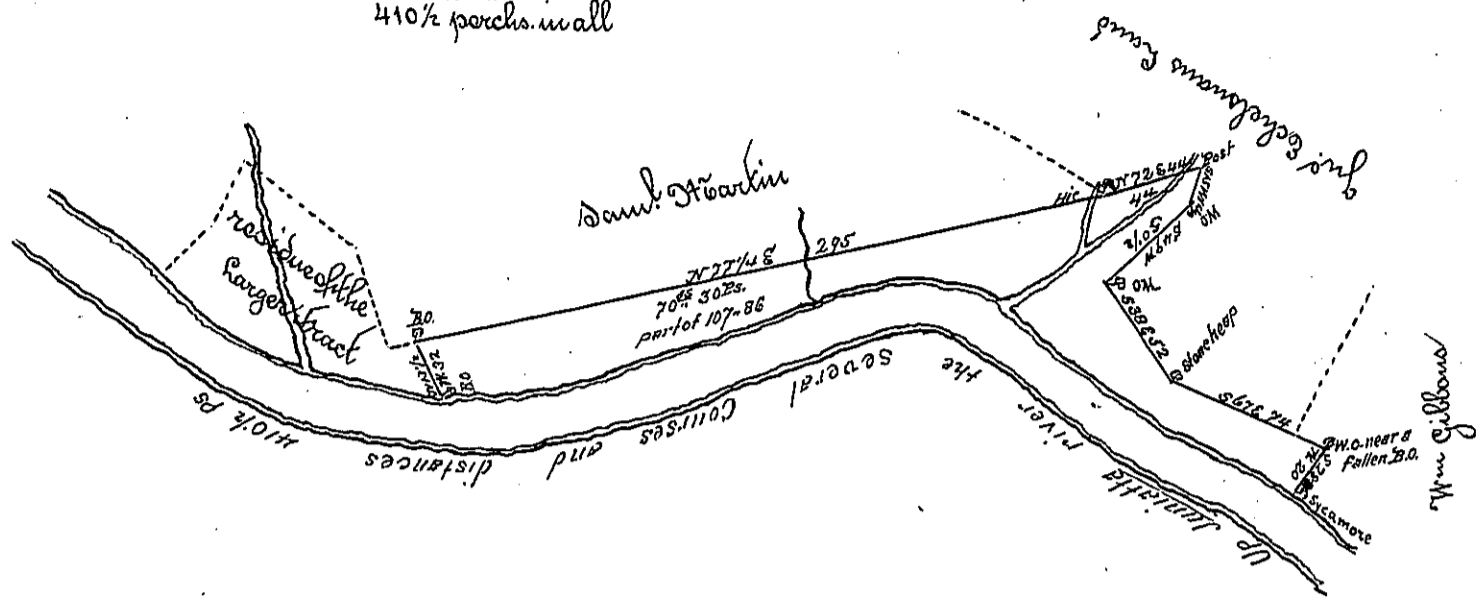


Course and Distances up
Luzetta River Beginning
at the Sycamore

- N 63 W 100
- N 55 W 34
- N 47 W 22
- N 78 W 26
- S 80 W 40
- S 68 W 112
- S 80 W 36
- S 89 W 20 1/2 to 30.

410 1/2 perchs. in all



A Draught of a tract of land situate in Buffalo Township, Cumberland County, containing 70^{ac} 30^{ps} and allowance of six $\frac{1}{2}$ Cent for roads be. it being part of a larger tract of 107^{ac} 86^{ps} and allowance; Originally surveyed to Frederick Stoner in pursuance of a warrant dated the 30th day of April 1765

To Samuel Cochran Esq^r. D. G.

Wm^m Wheeler D. S.

IN TESTIMONY that the above is a copy of the original remaining on file in the Department of Internal Affairs of Pennsylvania, made conformably to an Act of Assembly approved the 16th day of February, 1833, I have hereunto set my Hand and caused the Seal of said Department to be affixed at Harrisburg, this

seventh _____ day of _____ September, 1897

James W. Fraw
Secretary of Internal Affairs.